

Month 6 Base Rent Free!



For Lease

1865 McGilchrist Street- *Available!*

1865 McGilchrist Street SE, Salem, OR. 97302
Yard Space Near McNary Field

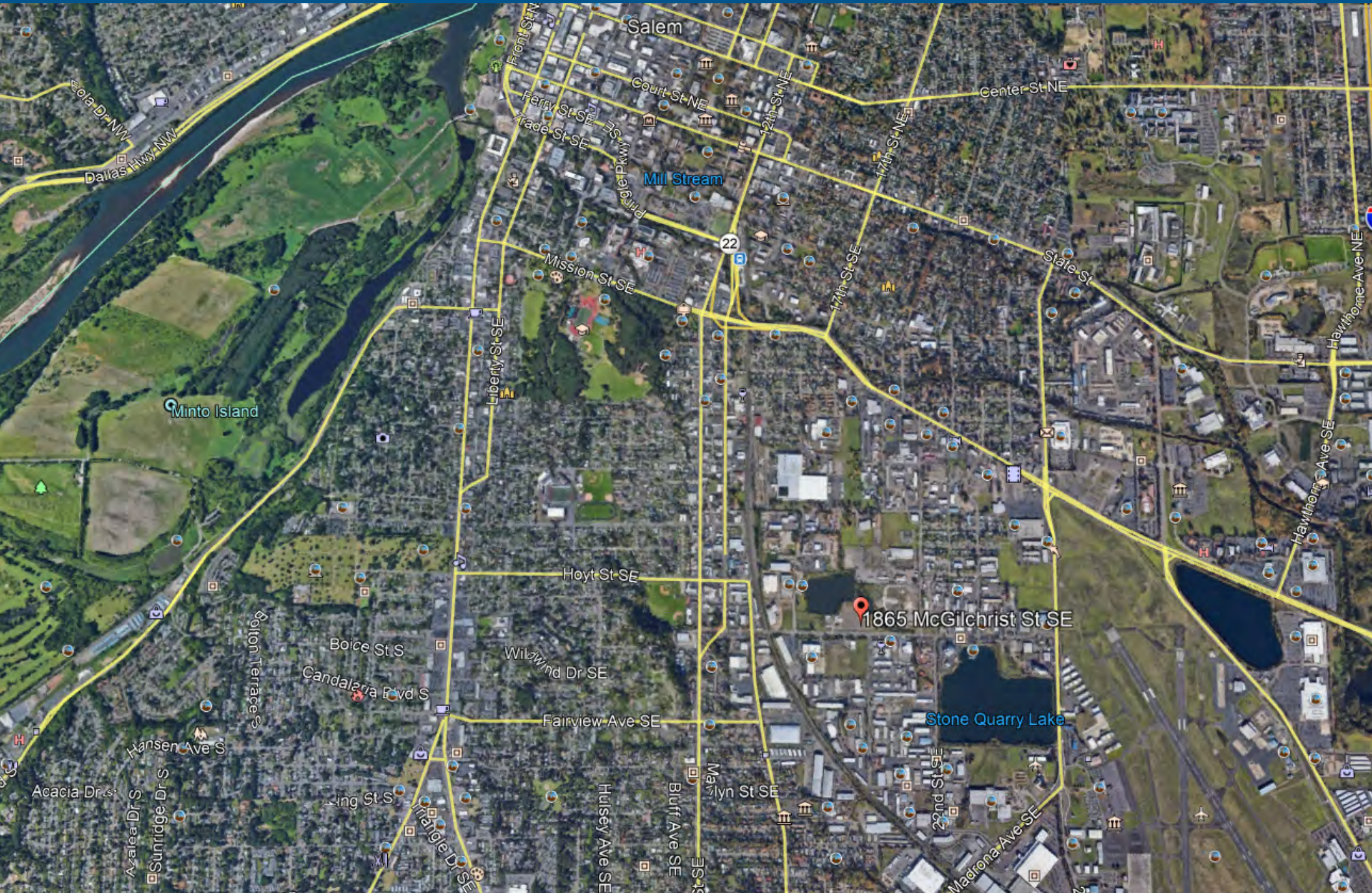
1865 McGilchrist Street

1865 McGilchrist St SE, Salem. OR. 97302

Leasingteam@GridPropertyManagement.com

503-406-2810

SalemYardSpace.com



1865 McGilchrist Street

1865 McGilchrist St SE, Salem. OR. 97302

Leasingteam@GridPropertyManagement.com

503-406-2810

SalemYardSpace.com

1865 McGilchrist St SE



AMENITIES:

- 40,000 SF of Available Space
- Can be divided into parcels of 10,000 SF
- Large gravel yard space available to lease for parking and storage. Ideal use for passenger vehicles, truck/trailer parking, equipment, and shipping containers. Security fencing with gated entry and power available.

PRICING

- \$1.00/sqft/year- 3,333.33/mo
- 1-year minimum lease

1865 McGilchrist Street

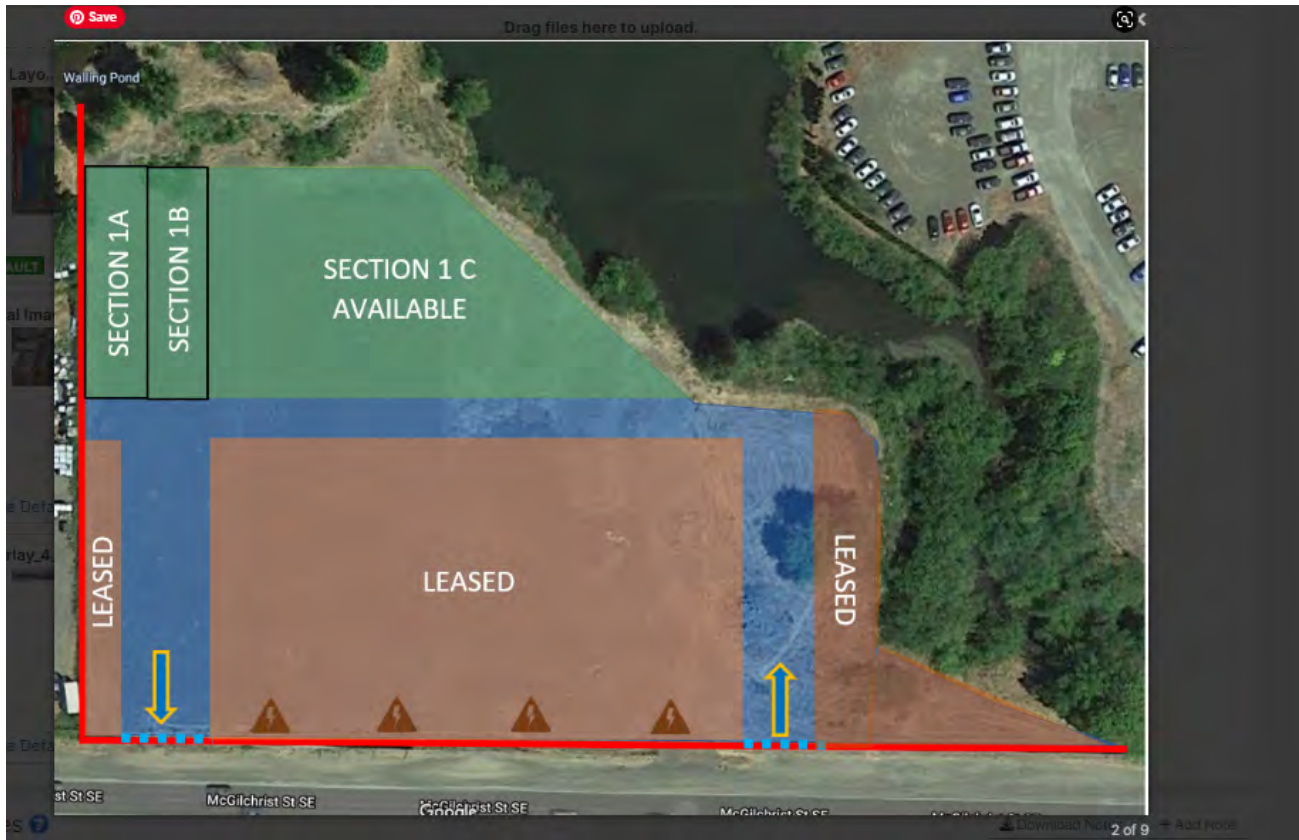
1865 McGilchrist St SE, Salem. OR. 97302

Leasingteam@GridPropertyManagement.com

503-406-2810

SalemYardSpace.com

1865 McGilchrist St SE - 1A



AMENITIES:

- 10,000 SF of Available Space
- Minimum of 10,000 SF parcel available.
- Large gravel yard space available to lease for parking and storage. Ideal use for passenger vehicles, truck/trailer parking, equipment, and shipping containers. Security fencing with gated entry and power available.

PRICING

- \$1.00/ft/year for a monthly all-in amount of \$833.33 for the 10,000 SF parcel
- 1-year minimum lease

1865 McGilchrist Street

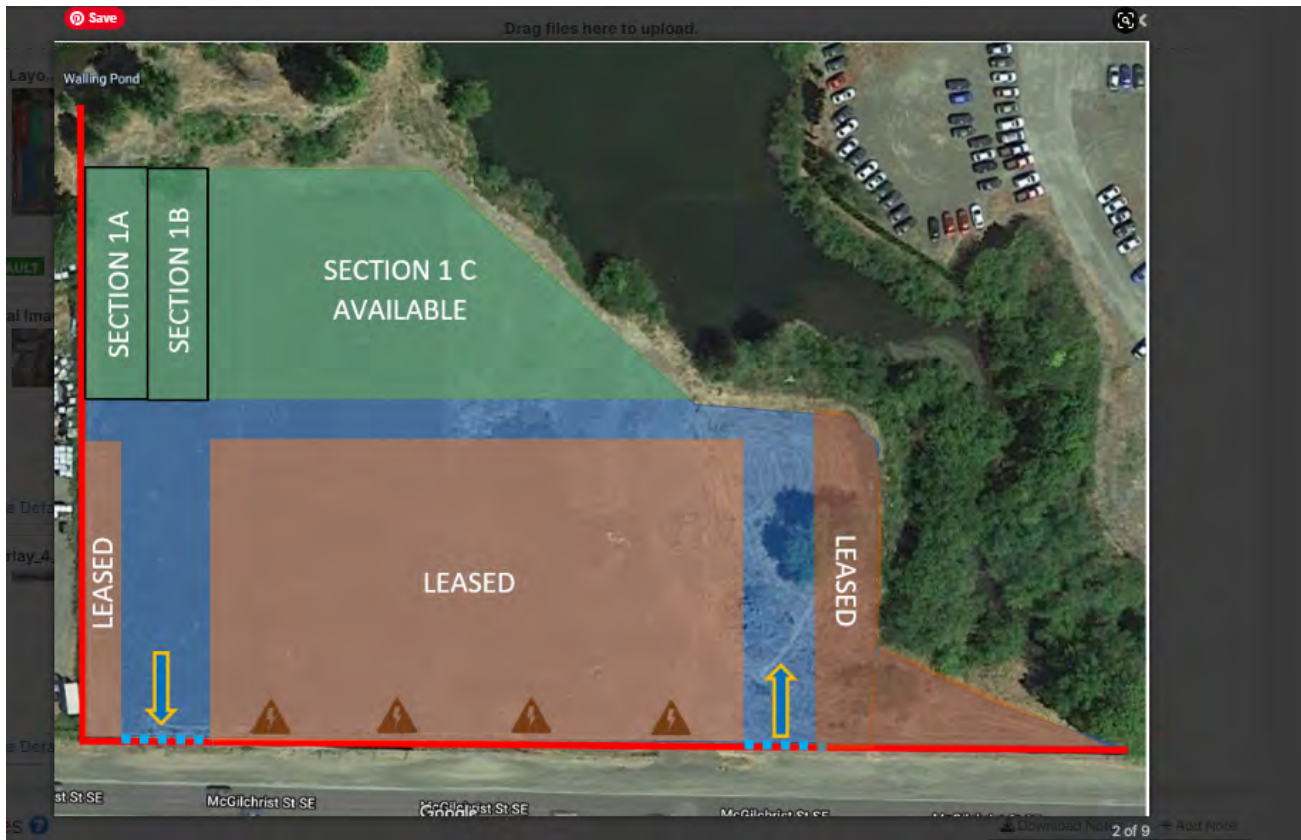
1865 McGilchrist St SE, Salem. OR. 97302

Leasingteam@GridPropertyManagement.com

503-406-2810

SalemYardSpace.com

1865 McGilchrist St SE - 1B



AMENITIES:

- 15,000 SF of Available Space
- Minimum of 10,000 SF parcel available.
- Large gravel yard space available to lease for parking and storage. Ideal use for passenger vehicles, truck/trailer parking, equipment, and shipping containers. Security fencing with gated entry and power available.

PRICING

- \$1.00/ft/year for a monthly all-in amount of \$1,250.00 for the 15,000 SF parcel
- 1-year minimum lease